



# Wi-Fi Quality Starter Pack

Step into enhanced Wi-Fi quality and control with our Wi-Fi Quality Starter Pack, specially designed for TV and Telecom operators. It's the smart way to start improving your in-home network's performance without committing to a big investment upfront. With this pack, you'll get a clear picture of the benefits of top-tier Wi-Fi control and see how it can make a real difference for your subscribers. It's about giving you the tools to make your service better in a simple, practical way. Get ready to upgrade QoE and offer a service that stands out. Let's make exceptional Wi-Fi the new standard.



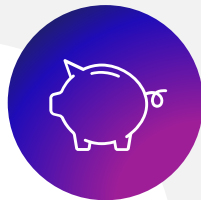
# By elevating your QoE with stellar Wi-Fi

You too could generate these amazing results:



**+19 months**  
customer lifetime

Our reference case shows that they keep their subscribers connected and satisfied for an extra 19 months!



**€ 35** per sub per year  
call rate savings

Cut down your annual support expenses by €35 per subscriber! Fewer Wi-Fi woes mean fewer calls.



**+Revenue**  
Premium and recurring

Unlock the potential for premium subscriptions and foster a consistent revenue stream. Great Wi-Fi sells itself!



**+Competitive**  
advantage

Stand out in a crowded marketplace with unbeatable Wi-Fi performance that positions you as a leader.

# How does in-home Wi-Fi elevate QoE?



streaming



gaming



remote work

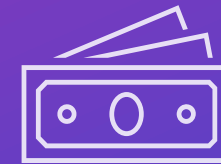


IoT

Wi-Fi ensures maximum wireless broadband throughput, so subscribers have an uninterrupted experience across various high-demand applications



Solving technical errors efficiently



Reduction of operational and customer service costs

Wi-Fi data and analytics help increase efficiency and effectiveness of network and TV platform management, by making it possible to prevent and solve errors quickly, lowering customer service call rates and costs

# The Wi-Fi Quality Starter Pack

Choosing to boost your Wi-Fi service is a big decision. To simplify it, we've crafted the Divitel Wi-Fi Service Starter Pack. It's designed to give you a clear preview of the improvements and benefits that come with better Wi-Fi control.

Here's what our Starter Pack could offer (customizable):

## 1. Business case workshop

Understand the successes and savings other operators have achieved. It's like having a roadmap that shows you the value you could be adding to your service:

- Explore successful business cases from other operators
- Total cost of ownership calculation
- Truck rolls and helpdesk call reduction estimations
- Lifetime value and NPS calculations

## 2. Operations workshop

Set your goals for Wi-Fi success and plan out the journey there. You'll have a clear vision of what your service can become, from tech specs to customer smiles:

- Define success criteria (KPI's)
- Requirements engineering
- Solution design and use cases
- Service design for 1<sup>st</sup>, 2<sup>nd</sup> 3<sup>rd</sup> line

## 3. Proof of Concept

Try it out in the real world with a few households and get a sneak peek at how much smoother your service could run:

- Two test households (three Wi-Fi 6 Access points per household)
- Operator Cloud Software (household analysis via the cloud)
- Consumer App
- Continuous Divitel troubleshooting and support



# What to expect

Embark on a transformative journey with our exclusive Wi-Fi Quality Starter Pack. In only three months you can expect the following:

## Resource engagement

- A half-day on-site technical workshop to fine-tune your infrastructure for peak performance.
- A half-day on-site commerce workshop to maximize your market potential.
- Collaboration with 2 user-friendly households for real-world insights.

## Outcomes to anticipate

- A comprehensive business case presentation (PPT) outlining the projected success trajectory.
- A Total Cost of Ownership (TCO) sheet (XLS) for financial transparency and planning.
- Detailed architectural and operational requirements report (PDF) to guide your technical strategy.
- Invaluable demos and feedback from user households to refine your offering.



[divitel.com/wifi](https://divitel.com/wifi)

for more information and to sign up for the Starter Pack